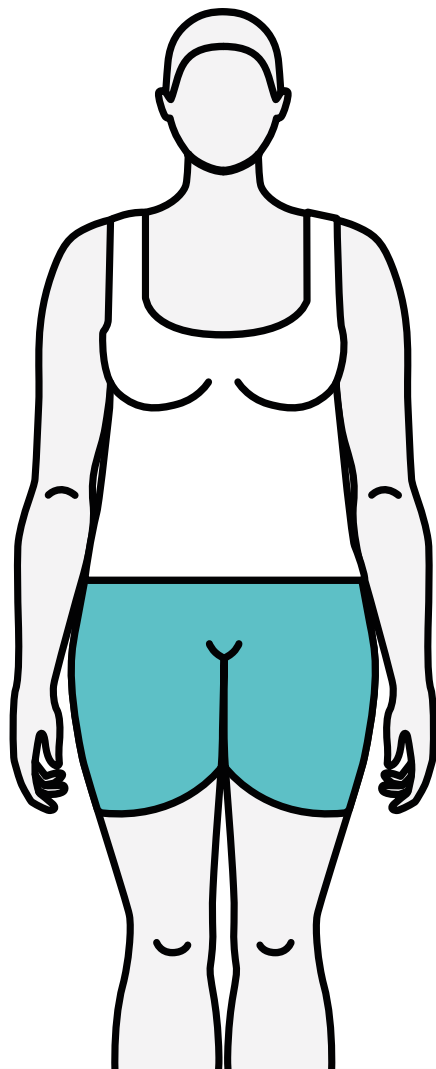


# Verifying your eligibility

Before we can prescribe weight management medication, our clinicians must confirm that the treatment is appropriate and safe for you. We ask that you upload two photos: one of your full body facing forward, and one of a government-issued ID (such as a driver's licence or passport) so that we can verify your weight.

Photo



Identification



**This step is a clinical safety requirement.**

Your photos will be reviewed only by Numan's clinical team and will be stored securely as confidential medical data. [Read more](#)

## Your guide

### Use a mirror or a timer

Avoid angles to prevent distortions.  
Make sure the camera is straight.

### Take a full-length photo

A full-body view is required for verification. This must include your face.

### Ensure it's not blurry or dark

Photos should be clear and well-lit.

### No group photos

Make sure you're the only one in the picture.

### Wear clothes outlining your shape

Avoid loose clothing.  
No naked pictures.

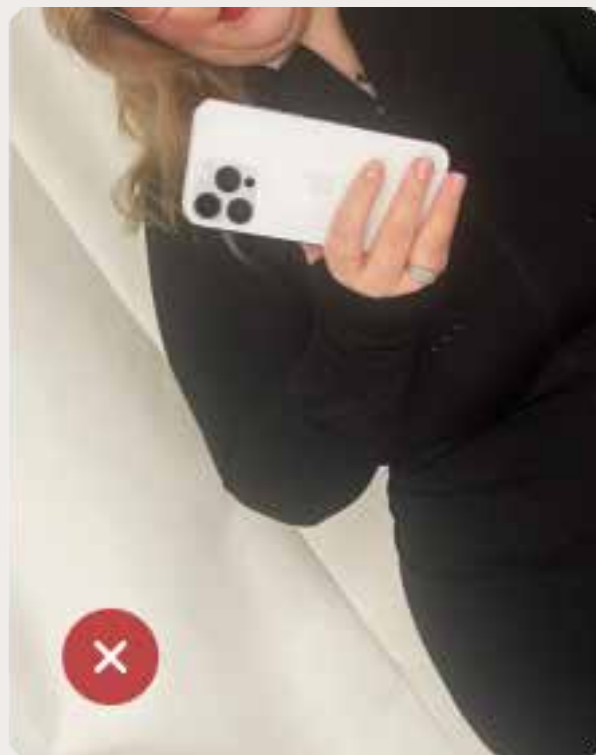
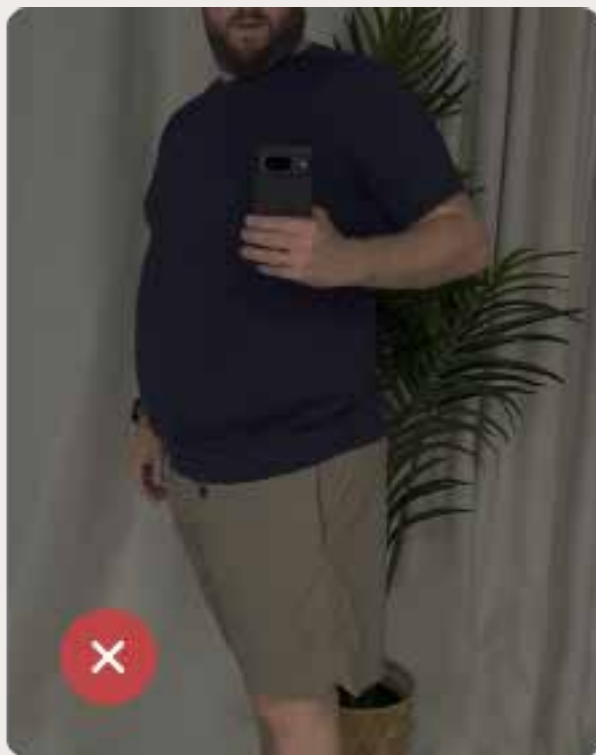
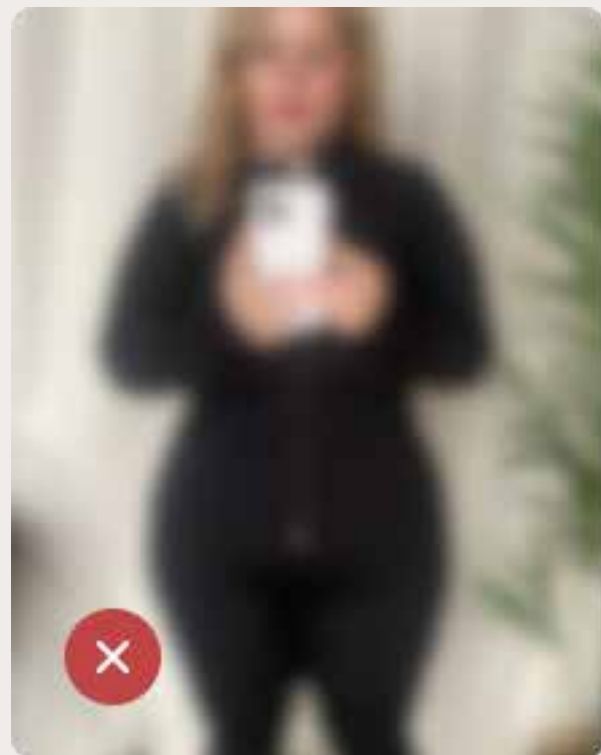
### Provide a government-issued ID

This could be a driver's licence or passport.

## Accepted examples



## Rejected examples



### Not comfortable providing photos?

You can also provide us with a weight measurement from your GP or local pharmacy. Contact [clinic@numan.com](mailto:clinic@numan.com) for more information.